

6 Features to Consider When Purchasing a Mobile Video Solution for Rail Industry

Mobile video solutions are becoming more commonplace in the rail industry. Conductors travel hundreds of miles per day, and companies need to ensure their engineers are following proper procedures, keeping them and others around them safe while proactively addressing safety matters with their locomotives.

What Features Does a Mobile Video Solution Offer?

Whether your mobile video solution just includes side and rear cameras or a complete view of your vehicles, there are several features to consider.

Field of View

The field of view is an important factor in determining which camera to purchase. The bigger the field of view, the more activity that can be recorded. Most mobile video cameras provide anywhere from 110° to 170° field of view.

Some specially designed cameras, like stop-arm cameras designed for school buses, feature 180° field of view.

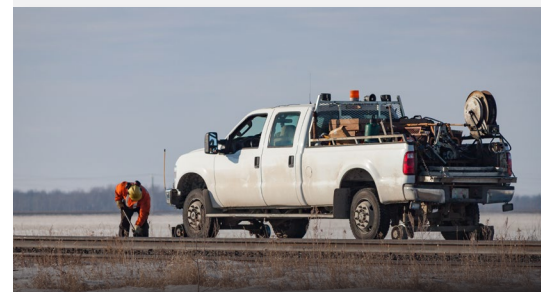
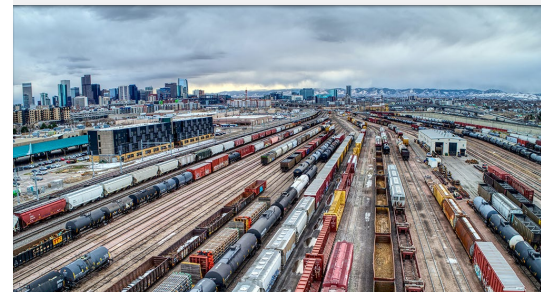
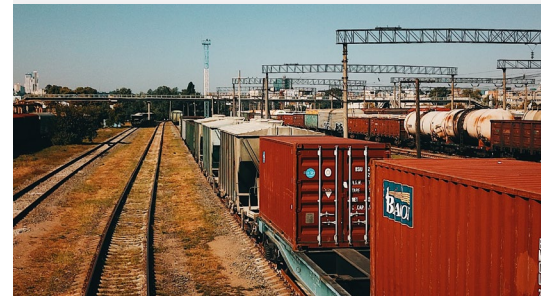
Continuous Recording

Pro-Vision's mobile video solutions ensure you won't miss a crucial detail. Continuous recording guarantees the whole journey is captured, including before the journey begins and after arriving at the destination.

Automatic Triggers

Automatically record key events without worrying about them being recorded over when a DVR runs out of space. Maneuvers such as a hard brake are automatically recorded and will remain on the DVR to be reviewed. Additionally, an event marker button can be placed in the cab so the engineer can manually mark events that don't fall under the automatic triggers.

continued





Durability

Exterior cameras are exposed to harsh environments, including rain, snow, dirt and mud. Pro-Vision cameras are IP69K rated to perform in these conditions and feature 17.3G shock ratings to withstand rough, bumpy roads. The onboard DVRs also feature solid-state hard drives. Unlike hard disk drives, SSDs feature no moving parts or the mechanical failures that come with them, making them perfect for the rail industry.

Live Feeds

The mobile video solution can be configured so railroad management can view any of the camera feeds live. This allows management to troubleshoot problems and advise the engineers in real time when necessary.

Data Management

Pro-Vision offers an optional video management program, CloudConnect, which is a CJIS-compliant solution that simplifies the data management process and saves time. CloudConnect allows you to request video and share footage with individuals either inside or outside your organization while storing the data on Pro-Vision's cloud.

No matter the size or purpose of your locomotive fleet, Pro-Vision has the scalable and versatile hardware solution to fit your needs.



About Pro-Vision

Founded in 2003, Pro-Vision is a leading video technology solutions provider trusted by thousands of organizations in 58 countries. Pro-Vision solutions include vehicle video recording systems, body-worn cameras, data management and cloud-based storage solutions. Pro-Vision's transit, law enforcement and commercial partners utilize these solutions to enhance safety, increase productivity and protect critical assets.



PRO-VISION VIDEO SYSTEMS

8625 Byron Commerce Dr. SW • Byron Center, MI 49315 • USA
p: 616.583.1520 • marketing@provisionusa.com