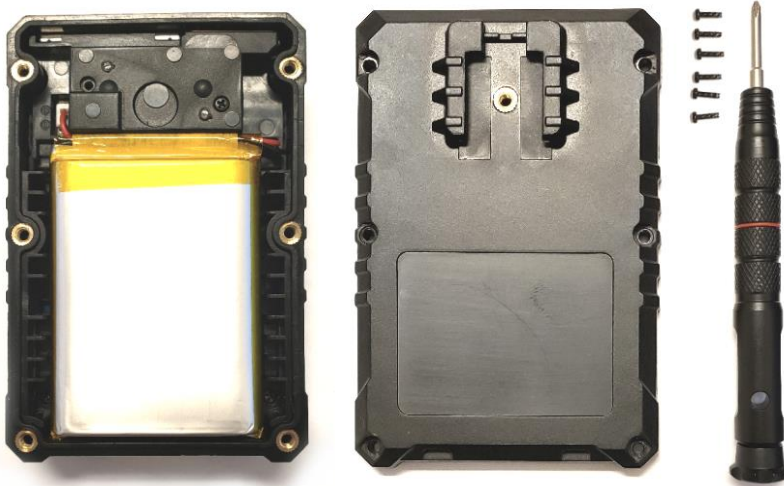


The procedure below is for the changing of a battery in a BODYCAM 4 using a new replacement battery (P/N: BC4-BAT).

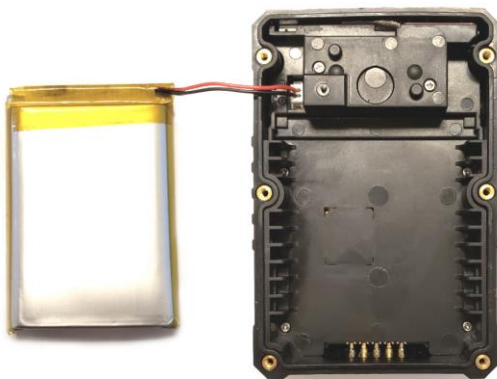
1. Power off camera and place lens side down on a flat surface.



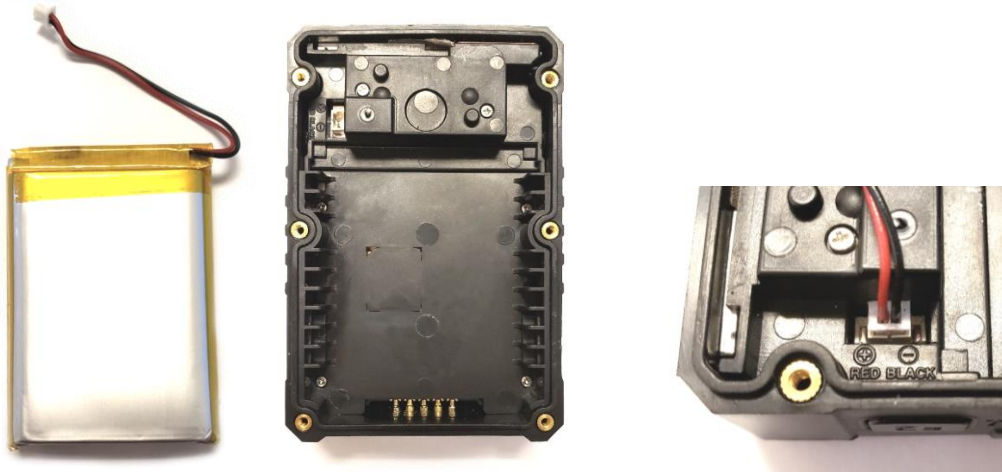
2. Using a #1 Philips screwdriver, remove the six screws on the rear of the camera.
3. Remove the back cover of the camera and place it to the side.



4. Remove the original battery from the camera and set it to the left of the camera so the wires are accessible.



5. Disconnect the original battery by gently pulling on the red/black wires in the upper left corner of the camera to disconnect the white connector from its jack.



6. Connect the new battery to the white connector in the upper left of the camera, ensure the red wire is oriented towards the top as designated.

Important! Use only plastic, wood, or other non-metal tools to assist in reconnecting the connector; metal tools could short the pins and cause damage to the battery.

7. Place the new battery in the camera with the label facing outward and the wires exiting the upper right corner of the battery. The wires should fold under the top edge of the battery as shown in the photo below.



8. Flip over the back cover and inspect the gasket, it should be seated in the channel completely as shown below. If the gasket is not seated, gently reseat it in the channel using a paperclip taking care not to damage the gasket.



9. Place the battery cover back onto the camera and recheck to ensure the gasket did not shift.
10. Reinstall the 6 screws. Start with the center screws and then the outer screws. Proper screw torque of 3 in-lbs is needed to ensure the gasket seals properly so the camera can remain water-tight.
11. Dispose of the old battery. Check your local regulations and dispose accordingly.