

## What Equipment Comes with a Mobile Video Solution for Waste Vehicles?

Mobile video solutions are becoming more commonplace in the waste industry. Waste drivers travel to hundreds of collection areas per day, and companies need to ensure trash was collected and their drivers are following proper procedures, keeping them and others around them safe.

Likewise, the roads are littered with distracted and negligent drivers, so having cameras capturing the journey tells the whole story, exonerating your drivers from false claims.

### What is a Mobile Video Solution?

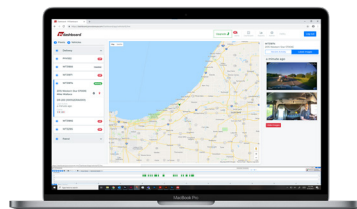
Simply put, a mobile video solution is a set of cameras and DVRs (digital video recorders) implemented to record around moving objects. Side, rear and forward-facing cameras on a vehicle are examples of a mobile video solution. This differs from security cameras, which are stationary or only record a specific area.

### Forward-facing Cameras Record the Drive

Forward-facing cameras, or dash cameras, record what the driver sees. Additionally, some forward-facing cameras also record in the cab of the vehicle to record what the driver is doing.

In-cab cameras paired with forward-facing cameras tell a complete story. If there was an incident where a waste driver had to swerve off the road to avoid hitting a car, both cameras will tell you what the driver saw and what the driver was doing leading up to the incident.

Did the car cut off the waste vehicle or was the driver distracted by their phone only to see they were about to hit a car because they weren't paying attention?



*continued*





## Side Cameras Help Drivers Navigate Congested Areas

Side cameras are helpful when drivers need to operate in tight areas. A monitor in the cab can be configured to automatically display the side cameras when needed. Generally attached near the cab of the vehicle by the side mirrors, the driver can get a clear view of their blind spots on either side.

Additionally, waste vehicles are unique in that they are outfitted with hoppers to collect trash, and cameras can be placed near hoppers to verify a collection was made.

## Rear Cameras Help Avoid Accidents

Rear cameras help waste truck drivers avoid accidents when in reverse. Just like with side cameras, a monitor in the cab of the truck can automatically display the rear camera when the truck is in reverse.

With all cameras, continuous recording can be set up to record as soon as the ignition switch is on and stay on for a set number of minutes after the ignition is off, meaning you won't miss a crucial event.

From residential garbage trucks to septic trucks, roll-offs and everything in between, Pro-Vision has the modular and versatile hardware solution to fit your fleet.

### About Pro-Vision

Founded in 2003, Pro-Vision is a leading video technology solutions provider trusted by thousands of organizations in 58 countries. Pro-Vision solutions include vehicle video recording systems, body-worn cameras, data management and cloud-based storage solutions. Pro-Vision's transit, law enforcement and commercial partners utilize these solutions to enhance safety, increase productivity and protect critical assets.



PRO·VISION VIDEO SYSTEMS

8625 Byron Commerce Dr. SW • Byron Center, MI 49315 • USA  
p: 616.583.1520 • [marketing@provisionusa.com](mailto:marketing@provisionusa.com)